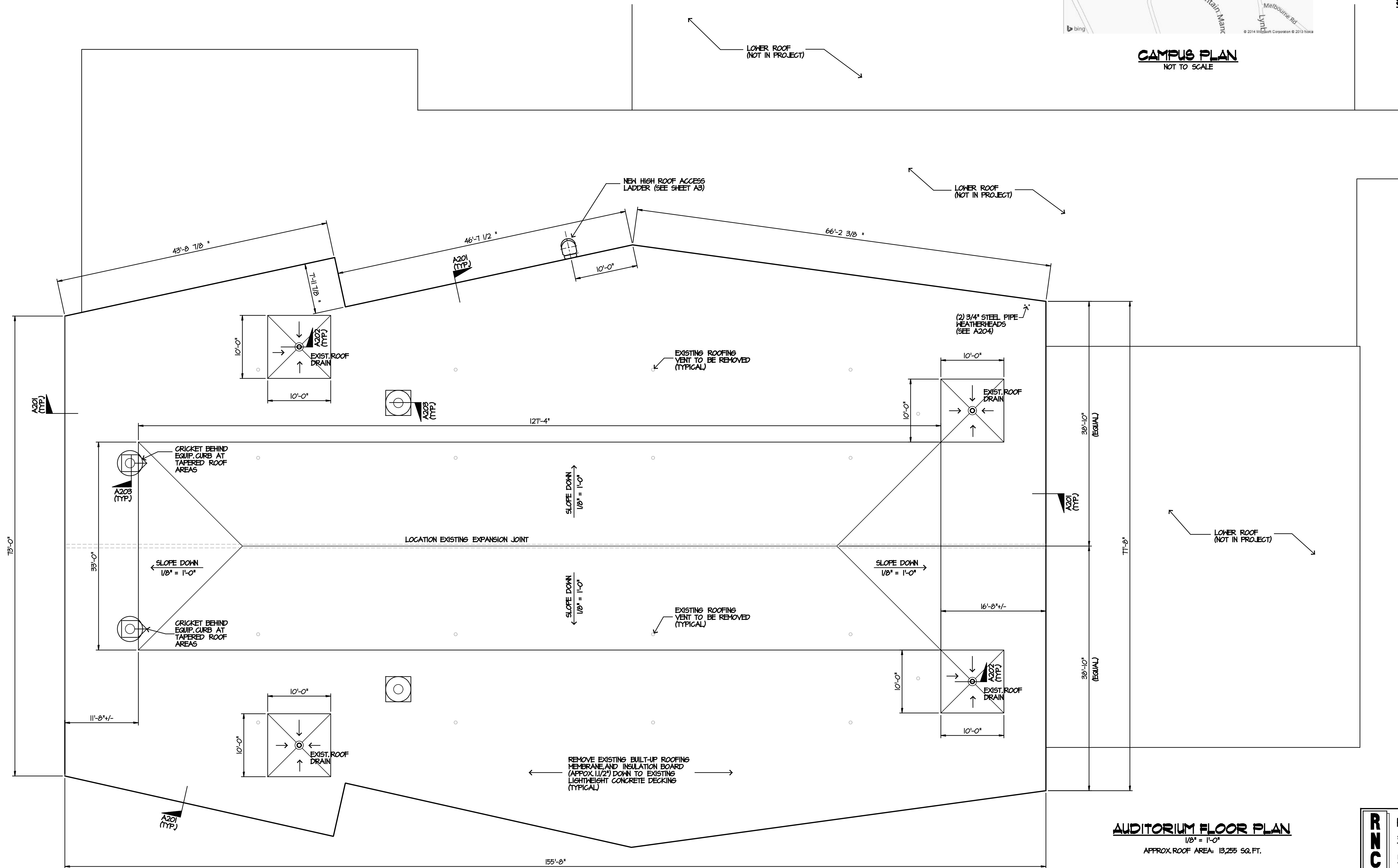


CAMPUS PLAN
NOT TO SCALE



SITE LOCATION PLAN
NOT TO SCALE



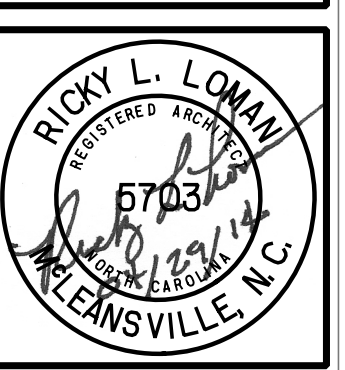
AUDITORIUM FLOOR PLAN
APPROX. ROOF AREA: 13,255 SQ. FT.

RNC Richard A. Nuhn, P.E. Consultants
 STRUCTURAL/ROOFING/WATERPROOFING/INVESTIGATION/ENGINEERING/ANALYSIS
 1913 Thayer Circle Greensboro, N.C. 27407
 Telephone: (336) 855-1182 Fax: (336) 855-0288

REVISIONS	
NO.	DESCRIPTION

SHEET DESCRIPTION	
FLOOR PLAN	

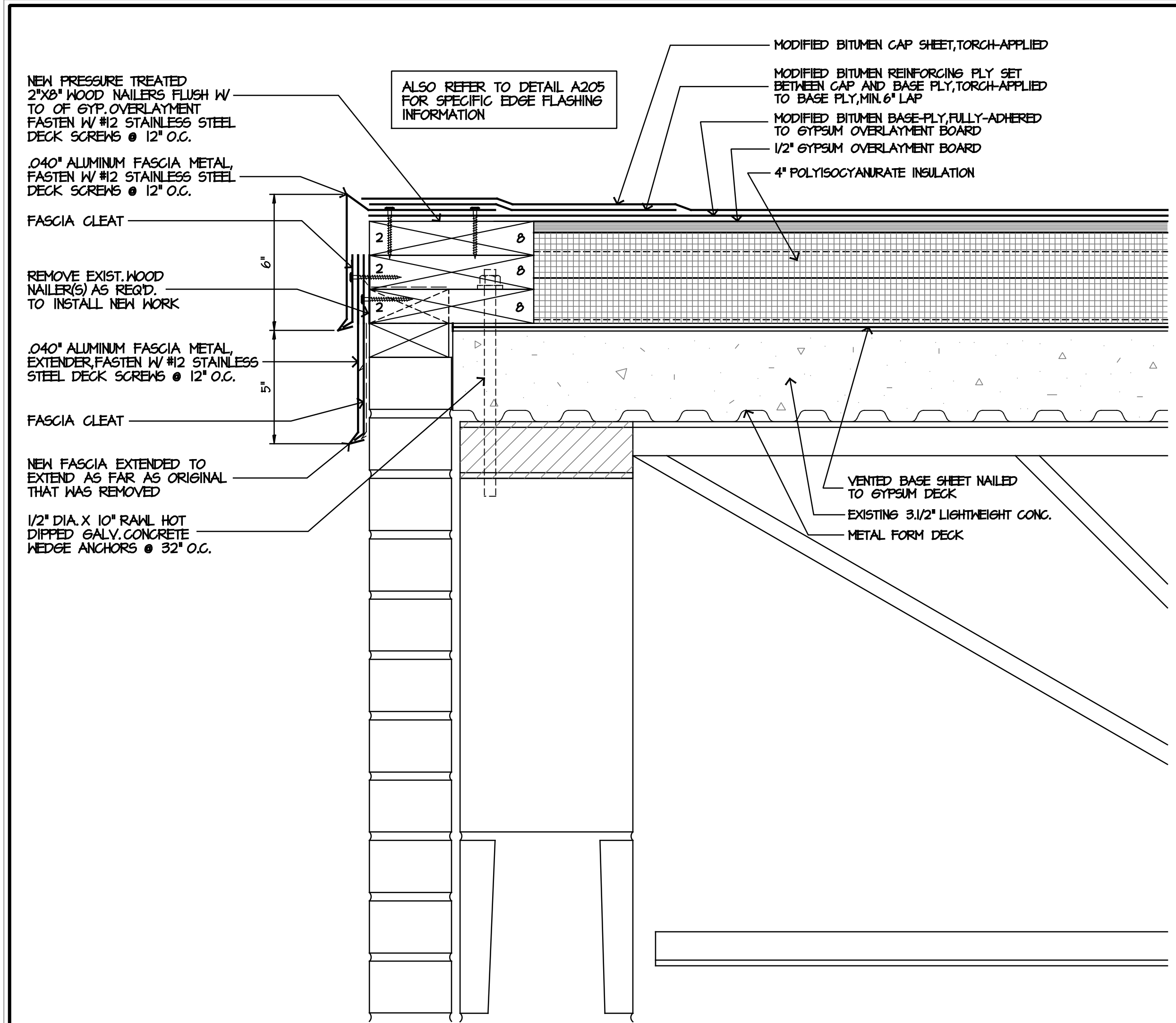
2014 AUDITORIUM REMEDIAL ROOFING
PAGE HIGH SCHOOL
 GUILFORD COUNTY SCHOOLS
 GREENSBORO, NORTH CAROLINA 27409
 201 ALMA PINNIX DRIVE



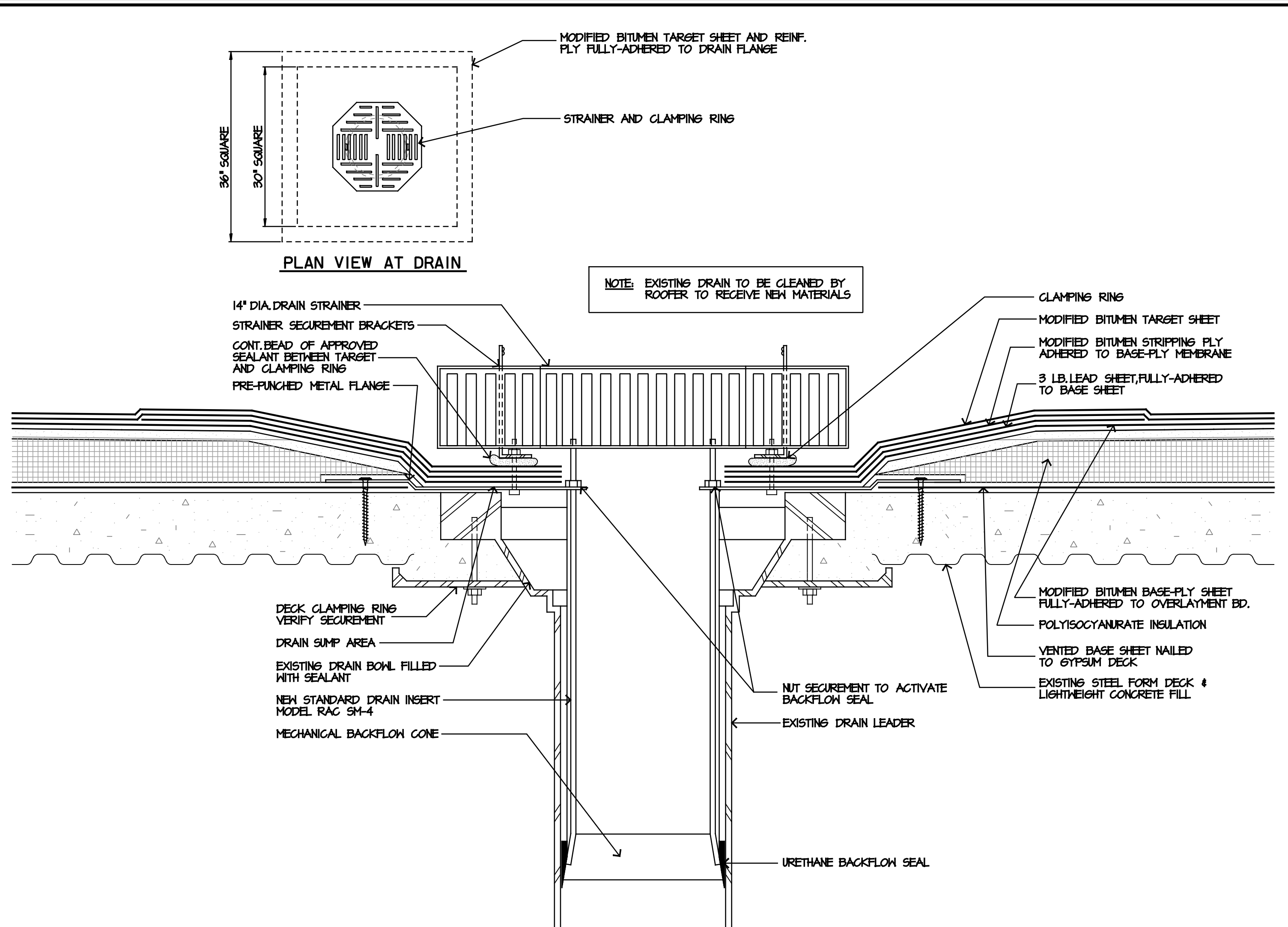
RICKY L. LOMAN, AIA
 ARCHITECT
 603 SUMMIT AVENUE, SUITE 102 GREENSBORO, N.C. 27405-7700
 (336) 273-7999

JOB NO:	13-35
CAD FILE:	ALDEN
DATE:	02/02/14
DRAWN:	RL
APPROVED:	RL

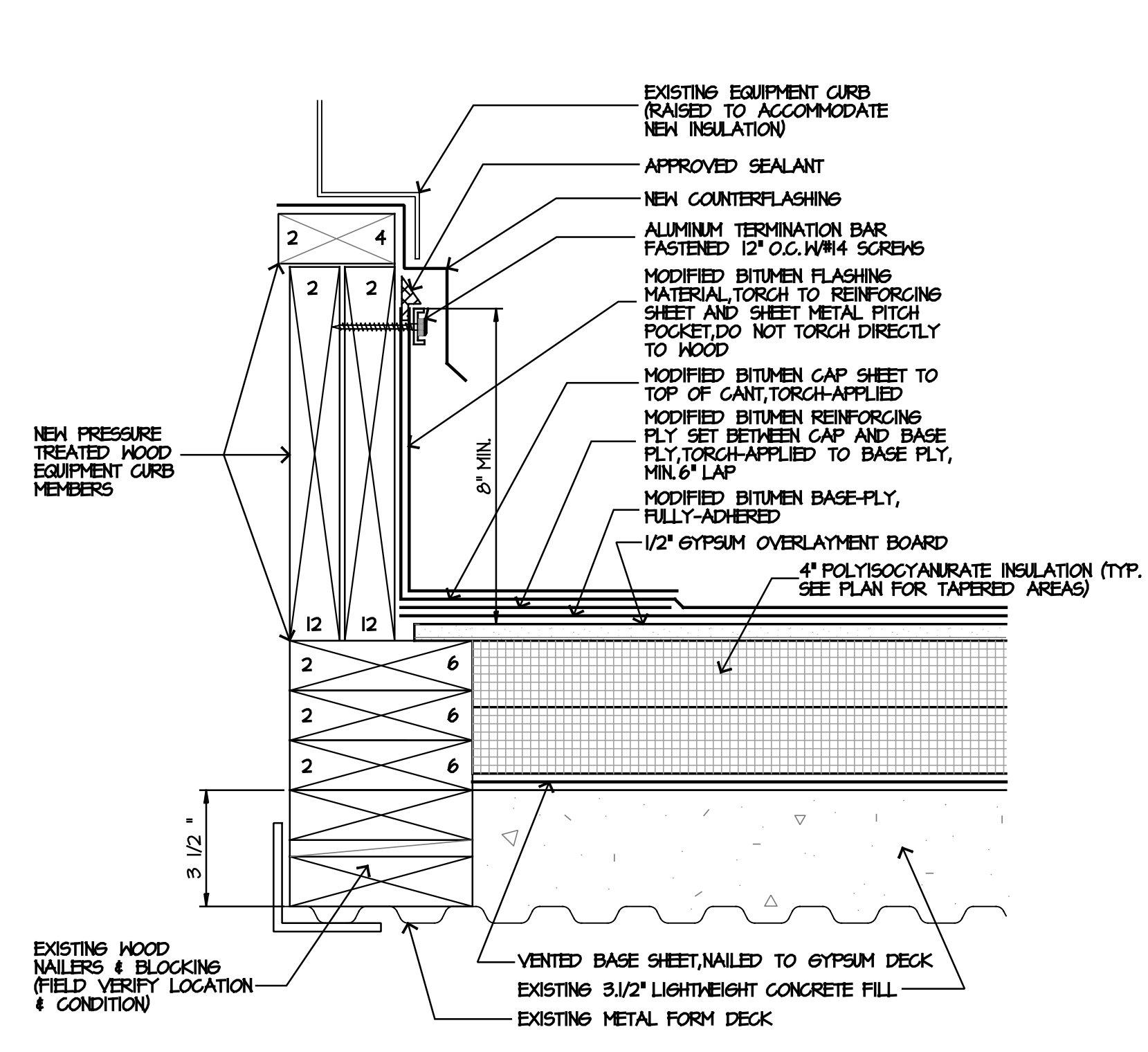
SHEET
A1
 OF 3



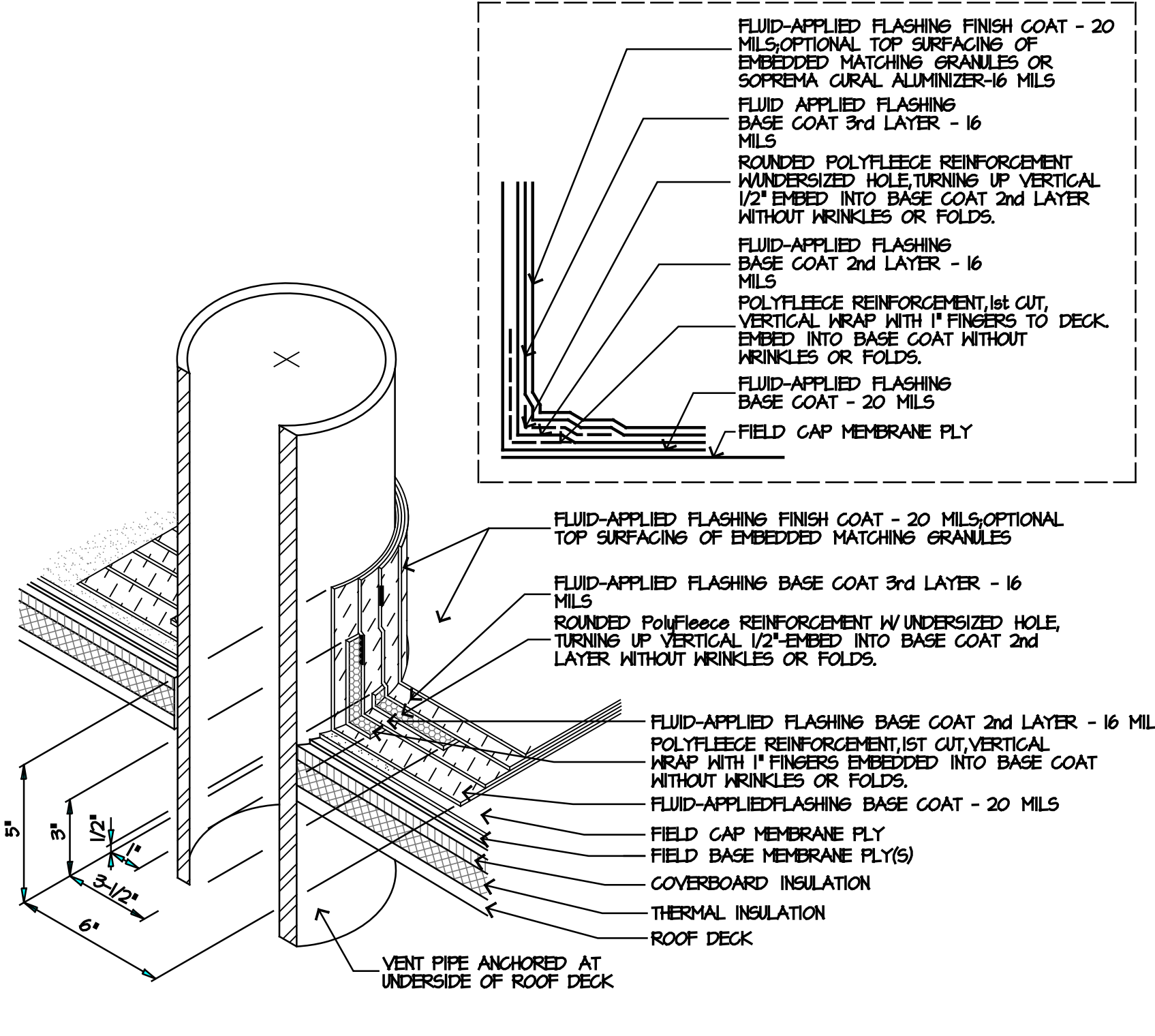
A201 TYPICAL FASCIA DETAIL
3" = 1'-0"



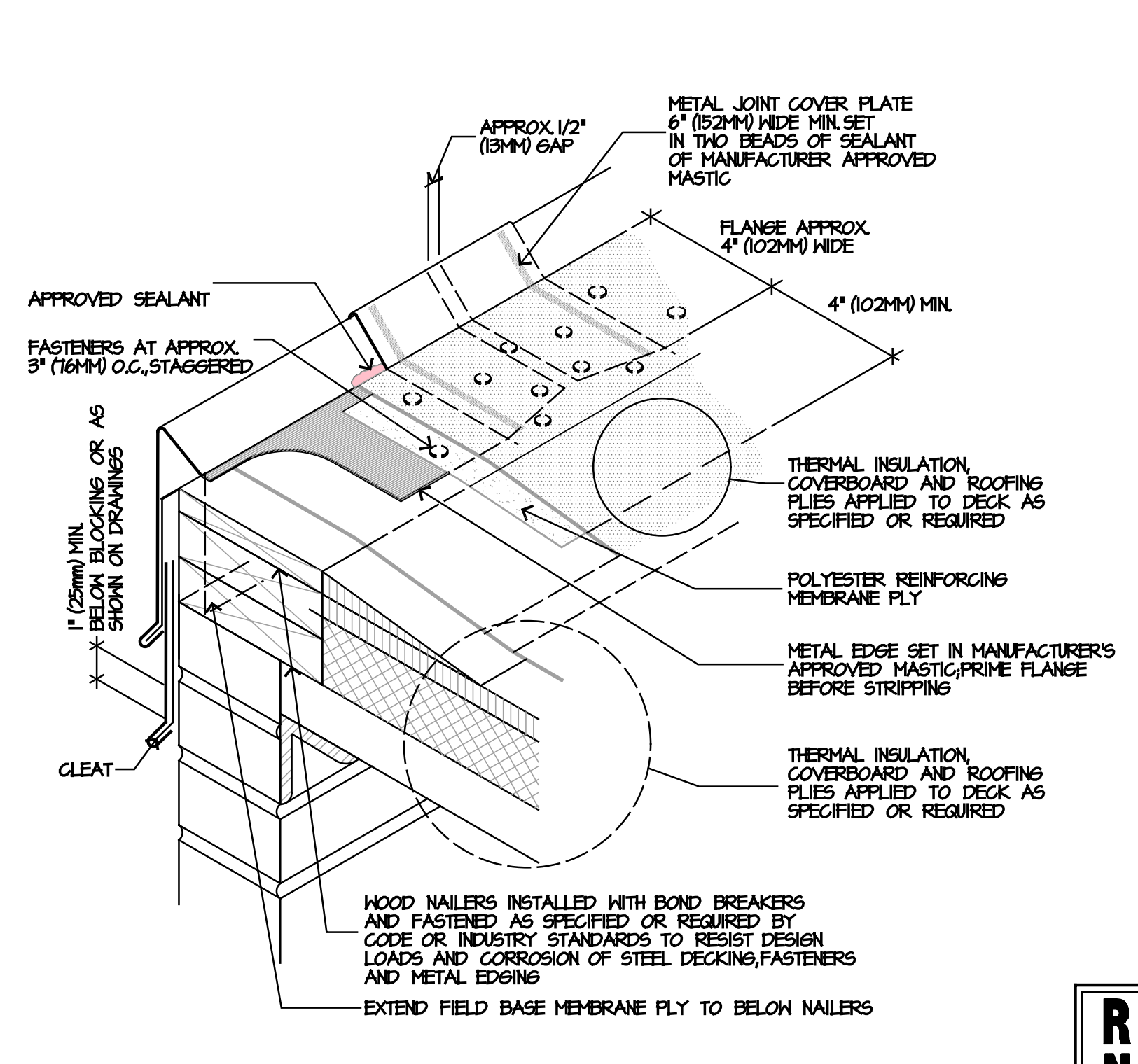
A202 TYPICAL ROOF DRAIN FLASHING DETAIL
3" = 1'-0"



A203 TYP. EQUIP. CURB FLASHING DTL
3" = 1'-0"



A204 PIPE PENETRATION FLASHING DETAIL
3" = 1'-0"



A205 TYPICAL FASCIA EDGE ISOMETRIC DETAIL
3" = 1'-0"

REVISIONS	
NO.	DESCRIPTION

SHEET DESCRIPTION	
DETAILS	

2014 AUDITORIUM REMEDIAL ROOFING
PAGE HIGH SCHOOL
 GUILFORD COUNTY SCHOOLS
 GREENSBORO, NORTH CAROLINA 27409
 201 ALMA PINKIX DRIVE

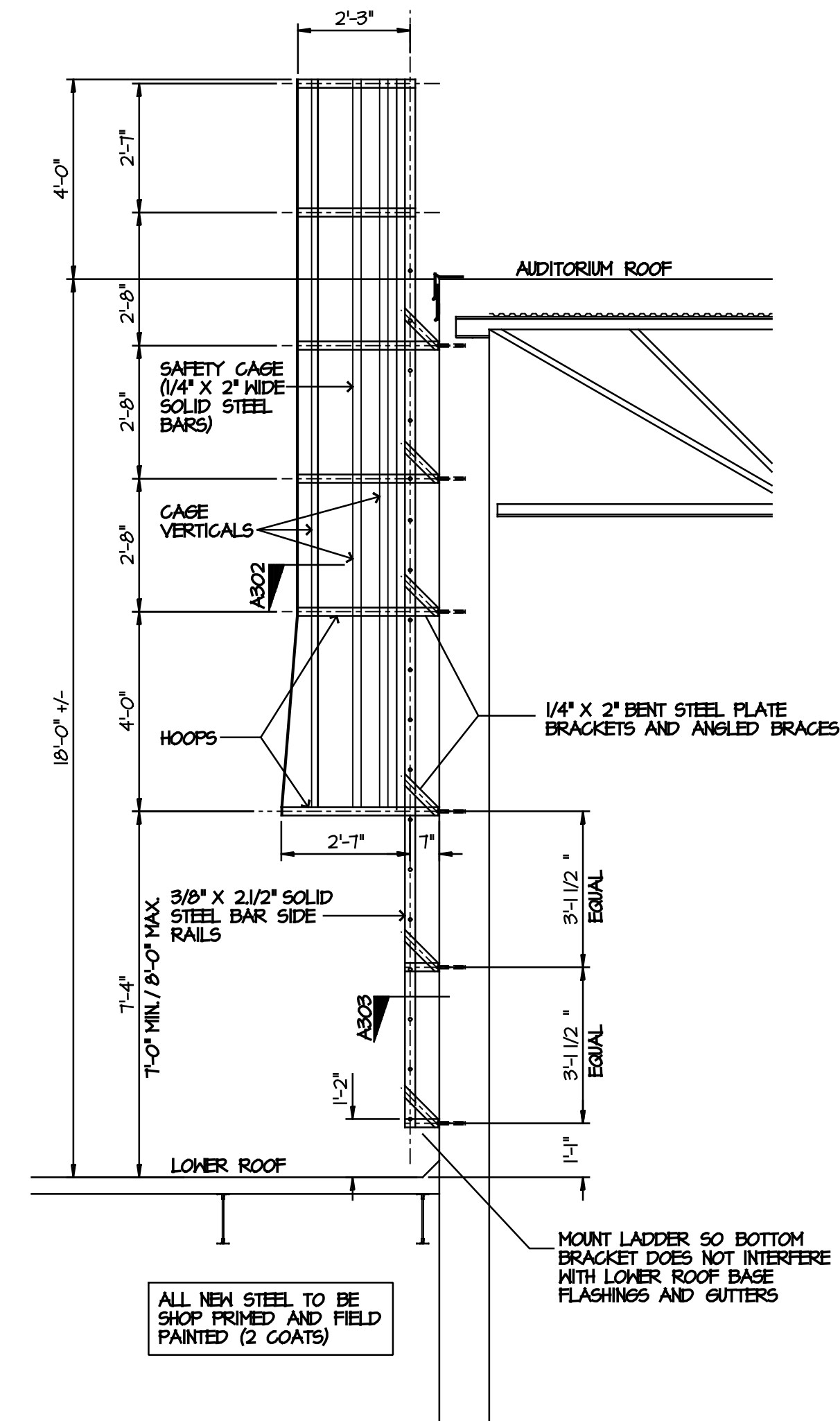


RICKY L. LOMAN, AIA
 ARCHITECT
 603 SUMMIT AVENUE, SUITE 102
 GREENSBORO, N.C. 27405-7700
 (336) 273-7999

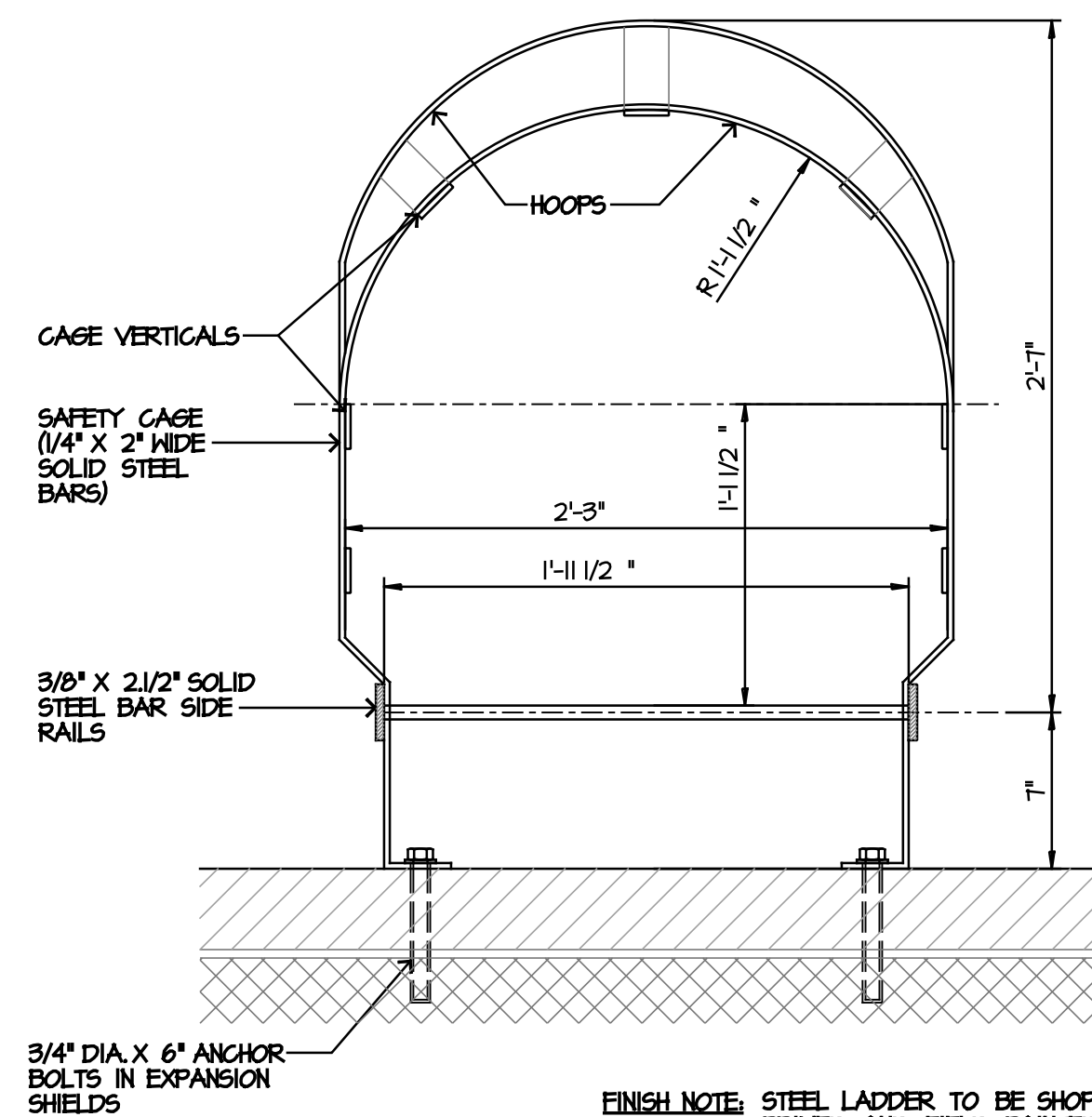
JOB NO:	13-35
CAD FILE:	A2.DGN
DATE:	02/02/14
DRAWN:	RL
APPROVED:	RL

SHEET
A2
OF 3

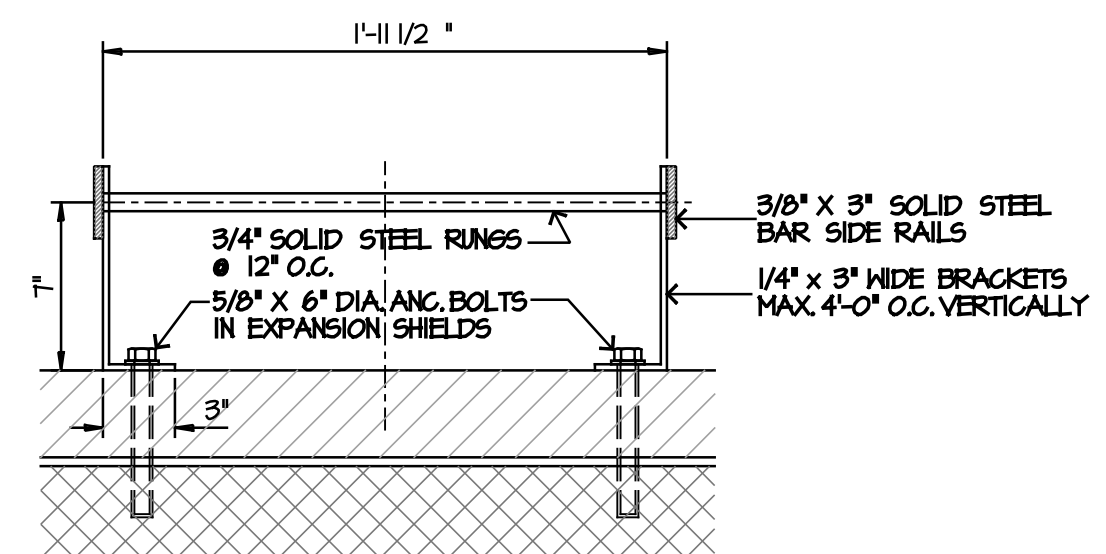
RNC Richard A. Nuhn, P.E. Consultants
 STRUCTURAL/ROOFING/WATERPROOFING/INVESTIGATION/ENGINEERING/ANALYSIS
 1913 Thayer Circle Greensboro, N.C. 27407
 Telephone: (336) 855-1182 Fax: (336) 855-0288



A301 ROOF ACCESS LADDER
 3/8" = 1'-0" LADDELEV.DGN
 ADD ALTERNATE #1



A302 LADDER DETAIL
 1/2" = 1'-0" ENLADDER.DGN

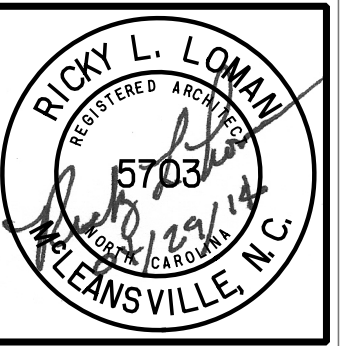


A303 LADDER DETAIL
 1/2" = 1'-0" OPLADDER.DGN

REVISIONS	
NO.	DESCRIPTION

SHEET DESCRIPTION	
DETAILS	

2014 AUDITORIUM REMEDIAL ROOFING
PAGE HIGH SCHOOL
 GUILFORD COUNTY SCHOOLS
 GREENSBORO, NORTH CAROLINA 27409
 201 ALMA PINNIX DRIVE



RICKY L. LOMAN, AIA
 ARCHITECT
 603 SUMMIT AVENUE, SUITE 102 GREENSBORO, N.C. 27405-7700
 (336) 273-7999

JOB NO:	13-35
CAD FILE:	A3.DGN
DATE:	02/02/14
DRAWN:	RL
APPROVED:	RL

SHEET
A3
 OF 3

RNC Richard A. Nuhn, P.E. Consultants
 STRUCTURAL/ROOFING/WATERPROOFING/INVESTIGATION/ENGINEERING/ANALYSIS
 1913 Thayer Circle Greensboro, N.C. 27407
 Telephone: (336) 855-1182 Fax: (336) 855-0288